

RetinaVue Network 3.4



Software installation instructions

Software version 3.4.XX



Advancing Frontline Care™

© 2017 Welch Allyn. All rights are reserved. To support the intended use of the product described in this publication, the purchaser of the product is permitted to copy this publication, for internal distribution only, from the media provided by Welch Allyn. No other use, reproduction, or distribution of this publication, or any part of it, is permitted without written permission from Welch Allyn. Welch Allyn assumes no responsibility for any injury to anyone, or for any illegal or improper use of the product, that may result from failure to use this product in accordance with the instructions, cautions, warnings, or statement of intended use published in this manual.

Software in this product is Copyright 2017 Welch Allyn or its vendors. All rights are reserved. The software is protected by United States of America copyright laws and international treaty provisions applicable worldwide. Under such laws, the licensee is entitled to use the copy of the software incorporated with this instrument as intended in the operation of the product in which it is embedded. The software may not be copied, decompiled, reverse-engineered, disassembled, or otherwise reduced to human-perceivable form. This is not a sale of the software or any copy of the software; all right, title, and ownership of the software remain with Welch Allyn or its vendors.

For information about any Welch Allyn product, contact Welch Allyn Technical Support: <http://www.welchallyn.com/support>.

DIR 80021987 Ver. A
Revision date: 2017-01

This manual applies to the REF 901108 Image analysis software



Welch Allyn, Inc.
4341 State Street Road
Skaneateles Falls, NY 13153 U.S.A.
www.welchallyn.com

WelchAllyn[®]
Advancing Frontline Care[™]

Contents

| | |
|--|-----------|
| RetinaVue™ Network software installation instructions | 1 |
| About this document | 1 |
| Description | 1 |
| System requirements | 2 |
| New RetinaVue Network™ software users | 3 |
| Install the RetinaVue™ Network software | 3 |
| Existing RetinaVue™ Network software users | 7 |
| Uninstall previous versions of the RetinaVue™ Network software | 7 |
| Update the RetinaVue™ Network software | 8 |
| Notes and tips | 10 |

RetinaVue™ Network software installation instructions

About this document

This guide describes how to install the Welch Allyn RetinaVue Network software. This guide is written for network system administrators and others with a background in information technology and with the necessary Windows privileges to install software.

Before using the RetinaVue Network software for clinical applications — or before setting up, configuring, troubleshooting, or servicing the RetinaVue Network software — you must read and understand this document and all other information that accompanies the RetinaVue Network software and related options or accessories.

Description

The RetinaVue™ Network is designed for healthcare providers who want to improve management of patients with diabetes. The RetinaVue Network enables providers to easily perform retinal exams in a primary care setting using a simple four-step process:

1. Acquire non-mydriatic fundus images in minutes with the simple, automated Welch Allyn RetinaVue™ 100 Imager or other cameras.
2. Transfer images via the secure HIPAA-compliant RetinaVue Network.
3. Images are evaluated by a board-certified retinal specialist.
4. A diagnostic report and referral/screening plan is returned to the provider the same day.

System requirements

| Item | RetinaVue Network |
|--------------------------------|---|
| Configuration | Tower or desktop PC preferred; laptop or tablet |
| CPU | 1 GHz (or equivalent) minimum, 2 GHz or greater recommended |
| Hard disc | 150 MB free HDD space, 16 GB free HDD space or greater recommended ¹ |
| RAM | 2 GB minimum, 4 GB recommended |
| Monitor resolution | 1280 x 720 recommended |
| Ethernet Port | RJ-45 |
| Ports | 2 USB, 2.0 port or greater |
| Operating system | Windows 7 with SP1 32-bit and 64-bit, Windows 8.1 64-bit, Windows 10 with latest SP RetinaVue Network Prerequisite software requirements: <ul style="list-style-type: none"> • Microsoft Visual C++ 2013 Runtime Libraries (x86) • Microsoft .NET Framework 4.5 • Perform a Windows update before installation. |
| Web browser | Internet Explorer (version 11 or greater), Chrome for Windows (latest version) |
| High-speed Internet connection | Broad-band Internet connection (minimum download speed 1.5 Mbps) |

¹This is space required to install the RVN application and to store exams while running. See Microsoft System requirements for your Operating System

New RetinaVue Network™ software users

Note If you have already installed the RetinaVue Network™ software, please see the **Existing RetinaVue™ Network software users** section for instructions about uninstalling previous software versions.

Note Windows® 8.1 and 10 tablet users with a touchscreen interface, use the touch feature where the instructions indicate a mouse-click.

Installing the RetinaVue Network™ software involves the distinct steps of logging in to the RetinaVue Network customer portal, downloading the RetinaVue Network software for each PC that you will be using to transfer images to the RetinaVue Network, and then activating the RetinaVue Network application for each authorized PC.

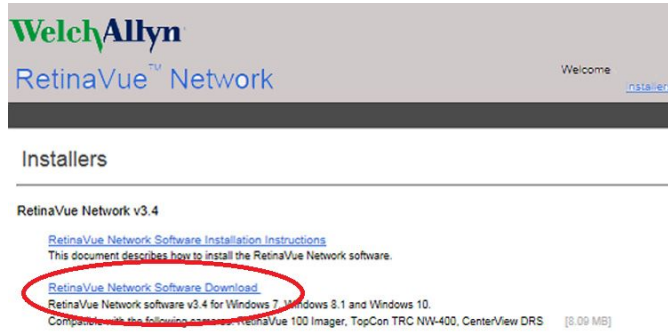
Install the RetinaVue™ Network software

Installation Pre-requisites

- The RetinaVue™ Network software installation requires Windows® Administrator privileges.
- A high-speed Internet connection is required to install the Microsoft Visual C++ 2013 Runtime Libraries (x86) and Microsoft .NET Framework 4.5 RetinaVue™ Network prerequisite software.
- Follow the instructions from the *RetinaVue™ Network: Registration Card, Customer Portal Quick Start Guide*, and the *Setup Process* to create an account with the Welch Allyn RetinaVue™ Network and complete the registration process.
- Log in to the RetinaVue™ Network Customer Portal using the new User Name and Password that you entered during the initial account set up.
- The RetinaVue™ Network software installation requires an activation key found on the RetinaVue™ Network Customer Portal Installers page. **Tip:** Copy the activation key from the Customer Portal Installers page and paste it into the RetinaVue Network software.

To acquire the RetinaVue™ Network software for the PC that you will be using to transfer images to the RetinaVue™ Network

1. Click on the **RetinaVue Network Software Download** link to download the latest RetinaVue™ Network Installer.



2. After the *RetinaVueNetworkSetup-3.4.X.exe* file finishes downloading, launch the application. Right-click on the executable file (*RetinaVueNetworkSetup-3.4.X.exe*) and run as administrator.

Note If prompted by the Windows operating system to run the software or to make changes to your PC, see the Notes and tips section for further information.

3. Accept the End User License Agreement terms by checking the *I accept* box and click **Install**.

Note If the Microsoft .NET Framework 4.5 and Visual C++ 2013 are previously installed as part of your PC's Windows operating system, the installer recognizes these applications. However, if the Install wizard needs to install these applications the installation will take an additional 5 to 10 minutes depending upon your network connection speed and traffic.

4. After the software installation is complete, click **Launch** on the *Installation completed successfully!* screen.
5. Enter your RetinaVue Network Software Activation Key from the RetinaVue™ Network Customer Portal Installers page into the RetinaVue Network software. (See example screen.)

Activation - Step 1

RetinaVue™ Network must be activated to continue.

Enter the activation key below then click **Next** to continue:
[found on the RetinaVue™ Network customer portal Installers page](#)

XXXXXXXX-XXXX-XXXX-XXXXXXXXXXXX

Note The red border around the data entry field indicates that data needs to be entered or that there is a data entry issue. The red border disappears once the activation key is correctly entered in the right character length and format.

Note Hover the mouse over the data entry field to display tool tips about the nature of the data entry issue. (i.e., Activation key cannot be empty.)

6. Click **Next**.
7. Select your clinic where you will be using the software by highlighting the clinic.
8. Select the state where the exams will take place.

Note If the exams take place in the same state as the clinic, click **Yes** and proceed to the next step. If the exams do not take place in the same state as the clinic, click **No** and use the dropdown menu to choose your state (or territory).

9. If your clinic is using a fundus camera other than the RetinaVue 100 Imager, select the camera from the dropdown menu.

Activation - Step 2

Which clinic will use this software?

| | |
|------------------|--------------------------------------|
| Medical Center 1 | Atlanta, TN 7925 United States |
| Medical Center 2 | Nashville, TN 37923 United States |
| Medical Center 3 | Memphis, TN 37911 |

Where will exams take place?

NY

Which fundus camera will be used during exams?

RetinaVue™ 100 Imager

10. Click **Next** to restart the software with the new settings. Click **OK**.

RetinaVue™ Network was activated successfully and will now restart.

OK

Existing RetinaVue™ Network software users

Note Windows® 8.1 and 10 tablet users with a touchscreen interface, use the touch feature where the instructions indicate a mouse-click.

Uninstall previous versions of the RetinaVue™ Network software



CAUTION Exams deleted from the software cannot be recovered.

Pre-requisites

- Clear out pending exams by submitting the exams or by deleting the exams.
- Uninstall the current RetinaVue™ Network software from each PC that you use to transfer images to the RetinaVue Network.
 - Windows 7: Click on the *Start Menu > Control Panel > Programs and Features*. Select the *RetinaVue Network* application by highlighting it. For RetinaVue Network v3.2 click **Uninstall** and check the box for the optional *Remove log files and folder*. For other versions, click **Uninstall** and then click **Yes**.
 - Windows 8.1: Right-click on the *Start Menu > Programs and Features*. Select the *RetinaVue Network* application by highlighting it. For RetinaVue Network v3.2 click **Uninstall** and check the box for the optional *Remove log files and folder*. For other versions, click **Uninstall** and then click **Yes**.
 - Windows 10: Right-click on the *Start Menu > Programs and Features*. Select the *RetinaVue Network* application by highlighting it. For RetinaVue Network v3.2 click **Uninstall** and check the box for the optional *Remove log files and folder*. For other versions, click **Uninstall** and then click **Yes**.

Note Allow the Windows versions of Microsoft Visual C++ 2013 Runtime Libraries (x86) and Microsoft .NET Framework 4.5 to remain on each PC that you use to transfer images to the RetinaVue Network.

Note If prompted by the Windows operating system to run the software or to make changes to your PC, see the Notes and tips section for further information.

Update the RetinaVue™ Network software

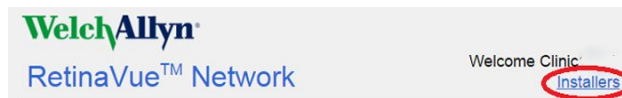
Installation Pre-requisites

- The RetinaVue™ Network software installation requires Windows® Administrator privileges.
- A high-speed Internet connection is required.
- Follow the instructions from your original *RetinaVue™ Network* registration e-mail containing the information to access the RetinaVue Network customer portal or follow this link: https://www.retinavue.net/RN_CustomerPortal/.

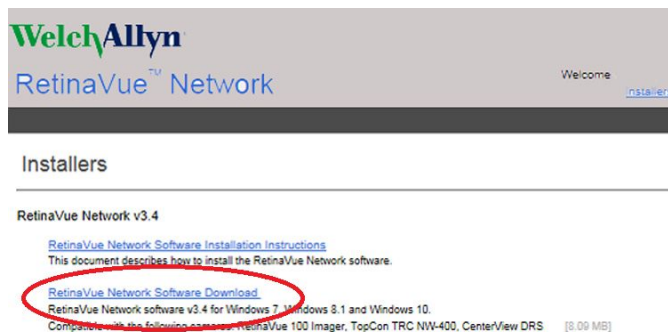
To acquire the RetinaVue™ Network software for the PC that you use to transfer images to the RetinaVue Network:

1. Log in to the RetinaVue™ Network Customer Portal . Enter your User Name and Password and click **Log In**.

2. Click on the **Installers** link.



3. Click on the **RetinaVue Network Software Download** link to download the latest RetinaVue™ Network Installer.



4. After the *RetinaVueNetworkSetup-3.4.X.exe* file finishes downloading, launch the application. Right-click on the executable file (*RetinaVueNetworkSetup-3.4.X.exe*) and run as administrator.

Note If prompted by the Windows operating system to run the software or to make changes to your PC, see the Notes and tips section for further information.

5. Accept the End User License Agreement terms by checking the *I accept* box and click **Install**.
6. After the software installation is complete, click **Launch** on the *Installation completed successfully!* screen.

Notes and tips

To correct an error, follow these instructions or contact Welch Allyn Technical Support: www.welchallyn.com/service.

Notes and Tips

Windows operating system messages during uninstall of previous software

Screen/message

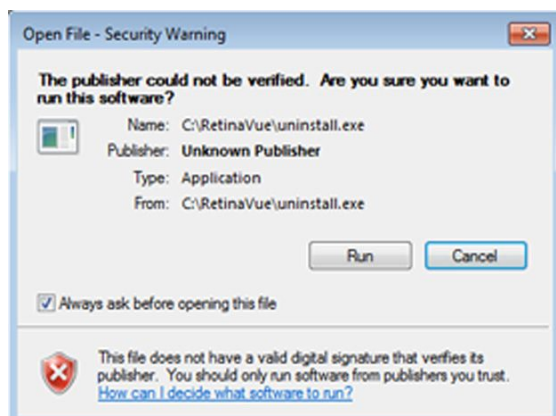
Solution

Windows 7

The publisher could not be verified. Are you sure you want to run this software?

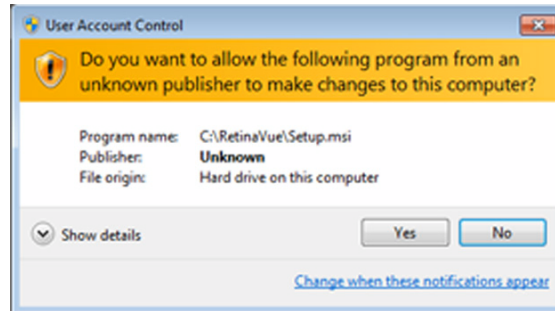
Click **Run** to allow the software removal.

By default, the Unknown Publisher notification is displayed. Uncheck *Always ask before opening this file* to disable this notification for all applications.



Screen/message**Solution****Windows 8.1**

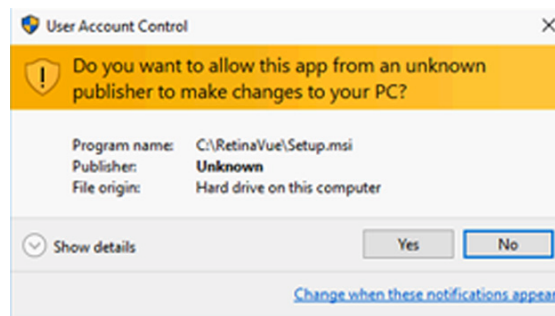
Do you want to allow the following program to make changes to this computer?



Click **Yes** to allow the software removal. By default, the notification is displayed. Select *Change when these notices appear* to disable this notification for all applications. Follow the on-screen information to disable this notification.

Windows 10

Do you want to allow this app to make changes to your PC?

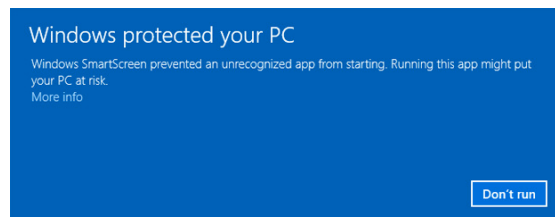


Click **Yes** to allow the software removal.

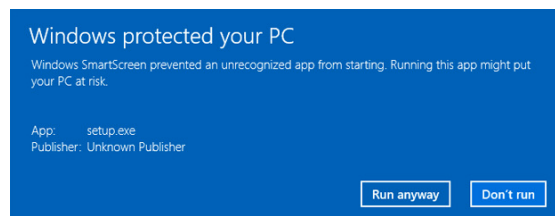
By default, the notification is displayed. Select *Change when these notifications appear* to disable this notification for all applications. Follow the on-screen information to disable this notification.

Windows 10

Windows SmartScreen prevented an unrecognized app from starting. Running this app might put your PC at risk.



If prompted by the operating system to run software from an unrecognized app, click **More info** at the first prompt screen. At the second prompt screen, click **Run anyway**.



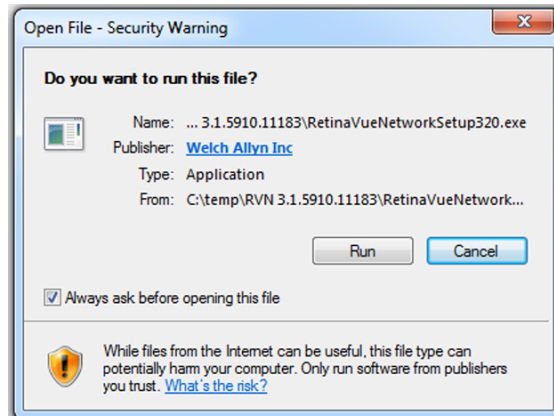
Windows operating system messages during installation of the new software

Screen/message

Solution

Windows 7

Do you want to run this file?

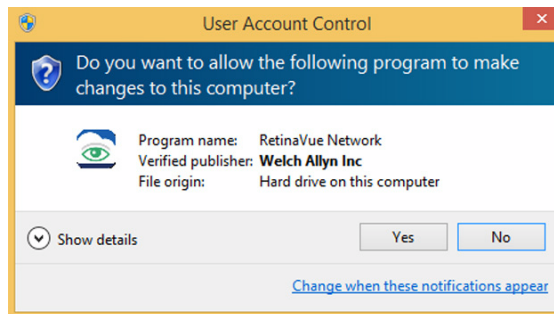


Click **Run** to open the application and to allow the installation.

By default, the notification is displayed. Uncheck *Always ask before opening this file* to disable this notification for all applications.

Windows 8.1

Do you want to allow the following program to make changes to this computer?

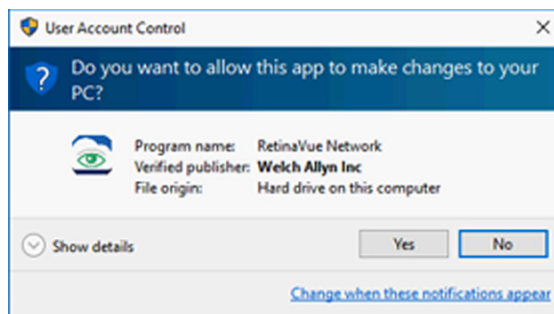


Click **Yes** to open the program and to allow the installation.

By default, the notification is displayed. Select *Change when these notices appear* to disable this notification for all applications. Follow the on-screen information to disable this notification.

Windows 10

Do you want to allow this app to make changes to your PC?



Click **Yes** to open the application and to allow the installation.

By default, the notification is displayed. Select *Change when these notifications appear* to disable this notification for all applications. Follow the on-screen information to disable this notification.